

LSD Bi-Weekly Resource Planning Meeting Agenda

14 November 2012

- Glance Back / 2-Week Look Ahead / Change-Control Board (CCB) Report (10 min) – F. Pilat
- Safety Report (5 min) – M. Logue
- Special Topic (5 min) – LSD Deputy Report – W. Oren
- Key Service Provider & Project Lead Reports (25 min)
 - S&A – C. Curtis
 - Safety Systems – K. Mahoney
 - Halls – W. Akers
- Meeting Recap / Parting Shots (5 min) – F. Pilat

Glance back and look ahead

Fulvia Pilat

LSD Resource Planning Meeting

November 14, 2012

- **RECO TestLab update:** COO (Conduct Of Operations) in the hands of Mortensen by COB Monday. Necessary condition for CTF cool-down and ensuing RECO TestLab activities.
- Overall cryo plan: CTF, HDR, CHL-1 (cool-down), CHL-2 carefully monitored (personnel from other labs on loan)
- **CHL-1 Cooling tower:** the tie for cooling CHL-1 from CHL-2 Cooling towers is completed. The entire project is slated to be completed ahead of time.
- **Hall B** review scheduled for today, November 14.
- We are getting ready for the Phase-1 **Re-baseline Director Review**, more later

Schedule updates

FROM 2 WEEKS AGO:

- Important to get the October progress collected and analyzed ASAP this month, as it is needed as input to the re-baseline (next topic)

THIS WEEK:

- **October progress** analyzed in preparation for the Review! Thank you PMI and you all.
- New progress summary (to replace EV charts for tracking progress)

LSD Oct 2012 Progress
 % Complete based on Labor Hours

	Activity Name	Start Date	Finish Date	% Complete	Float	Weeks Ahead/Behind	2012				2013				2014												
							M	J	J	A	S	O	N	D	J	F	M	A	M	J	J	A	S	O	N	D	
22																											
23	Accelerator Maintenance	5/18/12	9/18/13	11%	140 days to end of down	On Schedule																					
24	Injector (R100) (*)	5/24/12	8/5/13	49%	31 days to end of down	On Schedule																					
25	Cryo Maintenance	8/23/12	12/20/12	58%	30 days to linac cooldown	8 weeks behind schedule																					
26																											
27	Hall A - Deinstallation (*)	5/18/12	10/2/13	19%	90 days to Hall A Beam Comm.	4 weeks behind schedule																					
28	Hall A - 12 GeV (*)	5/18/12	3/28/13	40%	120 days to Hall A Beam Comm.	On schedule																					
29	Hall B - Deinstallation	5/21/12	3/7/13	47%	5 days to constrained Mid Feb 2013 date	6 weeks behind schedule																					
30	Hall B - 12 GeV (*)																										
31	Hall C - Deinstallation	5/21/12	1/18/13	70%	20 days to constrained mid Feb	10 weeks behind schedule																					
32	Hall C - 12 GeV	9/8/09	5/25/15	12%	(schedule is past the LSD)	On Schedule																					
33	Hall D - 12 GeV (*)	5/1/12	4/3/14	17%	65 days to start of Hall D Beam Comm.	1 week behind schedule																					
34																											
35	FEL Run Time	1/24/13	6/7/13	0%	28 days to prep for Admiral installation	On Schedule																					
36	FEL Admiral	2/27/12	9/12/13	17%	28 days to New FEL Ops w/ Upgraded Inj	7 weeks behind schedule																					
37																											
38	Facilities - CHL-1 Cooling Towers	3/1/12	1/25/13	75%	Contract constraints	On Schedule																					
39	Facilities - MCC HVAC/Roof	1/11/12	4/18/13	45%	Contract constraints	14 weeks behind schedule																					
40	Facilities - Counting House Renovation	4/20/12	4/15/13	50%	Contract constraints	On Schedule																					
							M	J	J	A	S	O	N	D	J	F	M	A	M	J	J	A	S	O	N	D	J

* Re-Baseline Changes to be made

Re-Baseline process

Original plan for the shutdown: re-baseline every 5-6 months

Re-baseline-1 Review: **November 16, 2012**

Re-baseline-2 Review: **April 2013** (include RECO/Commissioning plan)

Re-baseline goals:

- Revisit **LSD overall plan**, re-plan major activities and logic (beyond single CR' s)
- Update **scope of work**: add/remove activities captured by LSD schedule
- Look critically at **float**
- Analyze **resources**
- Define **priorities**

Re-baseline-1: 2 stage Review

Director Review November 16 → agenda next slide

November 16 – December 17

- Get feedback from Review Committee
- Implement re-baseline in Primavera
- Resource analysis
- Decide on priorities as needed
- *Do progress on new baseline schedule*

Director Review December 17

- Present new baseline to Review Committee
- Get feedback, adjust as needed

Agenda Review November 16 2012

1:30 -1:40	Overview and response to recommendations	F. Pilat
1:40 -1:55	Schedule status and October progress	D. Napier
1:55 -2:10	TestLab Re-commissioning: status and impacts	J. Preble
2:10 -2:25	Overall cryogenics work and plan	W. Oren
2:25 -2:35	Accelerator upgrade status	L. Harwood
2:35 -2:45	Cryomodules and RF integrated plan	M. Drury, B. Merz
2:45 -3:00	<i>Coffee Break</i>	
3:00 -3:20	Halls overview and plans	J. Gomez
3:20 -3:30	ESH&Q and Risk analysis	M. Logue, S. Smith
3:30 -3:55	Modified/ new scope of work (“Laundry Lists”)	D. Napier
3:55 -4:00	Process and plan for the re-baseline	F. Pilat
4:00 - 4:30	Discussion	

Schedule: Test Lab Limited Operations November & December 2012

- **October 31**
 - Conduct of Operations draft submitted by SRF to Facilities Management & EHS&Q
- **November 9 (target date) / November 16 (milestone)**
 - Review of document by FM, EHS&Q, Mortenson
 - Approval of COO by all parties
- **Starting November 12 (target) / November 19 (milestone)**
but not before COO approval
 - Cryo Team starts **clean up** (1 week), then **cool down** (1 week) Finish **November 26 or 30**
 - CMTF Team completes Controls and RF recovery, moves C100-6 into CMTF, prepares C100-6 for acceptance testing (three weeks) Finish **December 3**
 - VTA Team completes clean up, performs leak check, starts controls (**two weeks**)
- **November 21** Mortenson completes Test Cave Concrete Infill (Wall and Hole)
- **December 3** **C100-6 cool-down** in CMTF
- **December 10** **C100-6 Acceptance Testing** (four weeks) Finish **January 25**



= Good Day!



= First Aid Injury

*Click on symbol in calendar for details



= Recordable Injury

*Click on symbol in calendar for details



= Other Noteworthy Events

*Click on symbol in calendar for details

To Date:

First Aid: 13



Recordable: 3

DART: 2

SAD ES&H Report November 2012



November 2012 Events

	Date	Location	Event
	11/6/12	EEL	My hand was cut trying to catch a falling girder that was leaned against a nearby door
	11/6/12	Hall D	While employee was working with a razor, he cut his thumb.

Injuries – 6MMD vs. LSD

- 6MMD

- 15 First Aid Injuries
- 0 Recordable/DART
- 6 Hand/Finger
- 5 Arm
- 3 Leg
- 1 Neck

- LSD

- 13 First Aid Injuries
- 3 Recordable
 - Chipped tooth
 - Sprained ankle
 - Back strain
- 7 Hand/Finger
- 3 Arm
- 2 Leg
- 1 Back
- 1 Tooth

Work Observations

- 501 observations of work in LSD

Category	Number	Percentage
All Safe	456	91%
PPE	11	2%
Driving	6	1%
Housekeeping	6	1%
Ladders	5	1%

- 567 observations of work in 6MD

Category	Number	Percentage
All Safe	491	87%
Housekeeping	24	4%
PPE	14	2%
Ladders	11	2%
Equipment	7	1%

Successes and Opportunities in First 6 Months

- Successes
 - Applying LL to concrete removal planning in Hall C
 - Safety Observations demonstrating lots of examples of folks working safely
- Opportunities
 - Administrative infractions
 - Ergonomic issues






Challenges Down the Road

- Challenges for Supervisors
 - Avoiding human error issues resulting from complacency
 - “Use or Lose” vacation = less folks to do more




BACK-UP SLIDES

June 2012 Events

	Date	Location	Event
	06/13/2012	Experimental Staging Building	Employee stated "While assisting with lowering a load, I adjusted the wooden cribbing for the load and received a splinter in my finger." Employee was diagnosed with a splinter to right index finger.
	6/13/2012	Hall B	Employee reported frequent use of wire cutters has caused hand discomfort.
	06/27/2012	CHL 2	Employee was installing a standard chain wheel kit on one of the transfer lines behind Building 8. As he was removing a bolt, the bolt broke, causing the ratchet to slip and hit the contractor in his tooth. The contractor's right incisor was chipped.
	06/20/2012	Building 36	An unauthorized 208 volt, 30 Amp 4 wire cable with a male plug at one end and exposed wires (pigtail) at the other end, had been left plugged into a de-energized power source on the evening of June 19, 2012. Lock Tag & Try was not applied to power source before leaving for the evening. At approximately 10:00 am the following morning, an operator turned on the power supply, and the exposed wires arced and shorted, opening the breaker to the power supply and the electrical panel that fed it.
	06/20/2012	East ARC 2 Service Building #	Employee called to report that they were stung on his right elbow by a wasp. No treatment rendered and the employee returned to work regular duty.

July 2012 Events

	Date	Location	Event
	7/11/12	Hall D	Two workers were drilling through a compressor test stand. They discovered a sheet of lead between 2 layers of insulation. Work was immediately stopped and IH contacted. No uptake of lead occurred,

 = Good Day!

 = First Aid Injury
*Click on symbol in calendar for details




 = Recordable Injury
*Click on symbol in calendar for details

 = Other Noteworthy Events
*Click on symbol in calendar for details

To Date:
First Aid: 4
Recordable: 2
DART: 1



August 2012 Events

	Date	Location	Event
	08/09/2012	Hall B	During a site visit to Hall B, 2 employees and 3 contractors entered a radiologically controlled area without dosimetry. This violated our policy and procedure and the event is currently under investigation.
	08/16/2012	CHL #2	Employee brushed against a pipe that had a sharp burr on it. The employee was diagnosed with superficial laceration to right arm. The area was cleansed and a over the counter antibiotic ointment and band-aid was applied. The employee returned to regular duty.
	08/24/2012	Hall C	An employee was injured while assisting with moving a concrete piece in Hall C (SOS Shield house). The employee completed the move when they stepped backwards and lost their footing causing their left ankle to roll. The employee was sent off-site for a further evaluation and was diagnosed with a left ankle sprain, given a prescription, and placed on restrictions until cleared by a physician for regular duty.



== Good Day!



== First Aid Injury
*Click on symbol in calendar for details



== Recordable Injury
*Click on symbol in calendar for details




== Other Noteworthy Events
*Click on symbol in calendar for details

To Date:
First Aid: 5
Recordable: 2
DART: 1

SAD ES&H Report September 2012



September 2012 Events

	Date	Location	Event
	09/27/12	South Linac	While moving particle boards, employee pinched his left index finger, resulting in superficial laceration.



== Good Day!



== First Aid Injury
*Click on symbol in calendar for details



== Recordable Injury
*Click on symbol in calendar for details








== Other Noteworthy Events
*Click on symbol in calendar for details

To Date:
First Aid: 9
Recordable: 3
DART: 2



October 2012 Events

	Date	Location	Event
	10/12/12	SAB	While moving a flammable locker, the locker shifted causing employee to scrape left hand on the stake body truck
	10/16/12	ESB	We were trying to lift the load cell with the help of a lifter, when the load cell slipped away and dropped into my hands lacerating hand and straining thumb
	10/17/12	Hall C	While performing a survey at the Hall C truck ramp, brushed across some rebar and cut leg
	10/18/12	In front of MCC	While tightening a bolt on a golf cart battery with a wrench, right arm touched the battery hold-down bolt and gave worker a slight shock
	10/24/12	Hall D	After working under a solenoid cryo box, employee stood up and soon there after experienced sudden onset of severe low back pain.

LSD-D 2012-11-01 Thu–2012-11-13 Tue

Arne Freyberger

November 13, 2012

Accelerator Operations Department

- Musts
 - ▶ Maintain excellent cross group communication to facilitate safe work planning and execution
 - ▶ Two weeks without a stop work discussion with SSG
 - ▶ Start migration towards $ODH > 0$ in parts of the tunnel
- Shoulds
 - ▶ Work towards visualization of progress so far

Significant Accomplishments

- H₂O flowing through CHL Cooling Tower
- North Linac posted as ODH1: In preparation of He flow
- PSS tested and revived ODH system (see above)
 - ▶ No stop work discussions with SSG!
- BeamPipe in tunnel Fabrication and Cleaning established and now routine
- Started Magnet/Girder installation in 1S region
- Completed survey of cartridge positions, waiting analysis to determine impact
- TestLab/TEDF COO/ApendixA out for signatures
- Automated generation of the Gestation Chart (Slide 6)

CEBAF Segmented Status: One Liners

1S installation started and on-going

EastArc Magnets complete! Missing beam pipe in Arcs 1&3

1R installation about 50%?, a few stands and big dipoles remaining

2S plates in, ready for grouting and stands

WestArc Missing 3 beam pipes in Arc10 and 4m dipoles and girders at end of line

2R stands in

ABC transport Removal not complete

D transport S&A marks on floor, ready for plates and stands

C(R)100 7 in place, 4 commissioned, 4 in progress

C25/C50 0 out of 41.25 recommissioned: waiting for cryogenics

- Present Energy Reach: 0 GeV

CHL 1 || 2 Transfer Line and Upstair PM complete, coldwork PM on-going

CEBAF Segmented Status: One Liners

TestLab/TEDF COO/ApendixA out for signatures, ODH restored, PSS not functional

HDR Warm Gas and transfer line work on-going

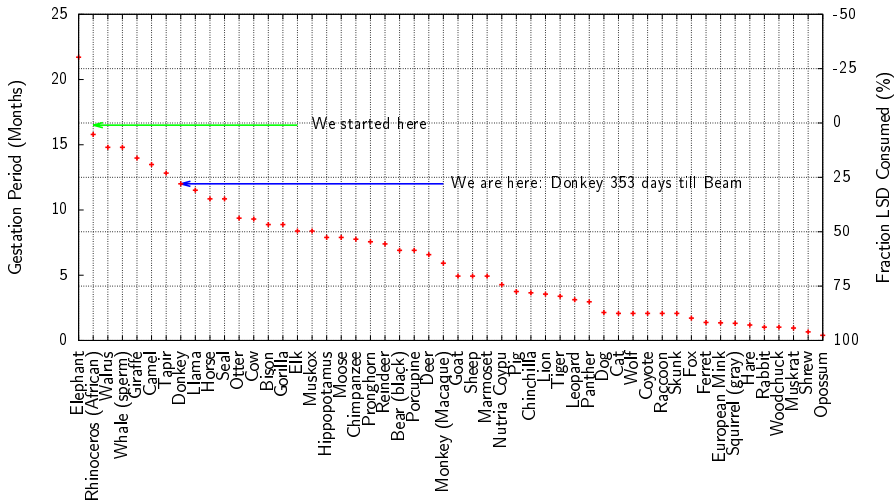
HallA Compton region disassembled

HallB Tear out progressing: S-Clam and DC gone

HallC

HallD LHe distribution box on solenoid installed

Gestation Chart: Biological equivalent to get to beam operations



Shutdown Work Summary

Organization: Alignment

Name: Chris Curtis

Date: 14 Nov, 2012

Last Two Weeks

Work That Went Better Than / As Expected:

- East arc alignment for hookup completed.
- Cartridge measurements in arcs and linacs completed.
- East recombiner 2A alignment of 5 more components.
- QR magnets & girders fiducialized in MMF.
- Bolt layout in south-west (spreader / extractor)
- Elevation survey in line D.
- FEL alignment and layout.

Work That Went Slower Than Expected, Delays, and Issues:

Ongoing Shutdown Work

Upcoming Work (3-6 weeks from now) (green = no concerns; yellow = some concerns; red = serious concerns)

Project	Status	On Schedule?	Tasks	Comments/Concerns
12 GeV S/R	x 		SW Extractor quad girder 2A alignment	Started
12 GeV S/R	x 		1R ZA step 2A alignment	Next few days?
12 GeV S/R	x 		1S step 2A alignment	Next few days
12 GeV S/R	x 		2R stand alignment	When available

Project	Status	On Schedule?	Tasks	Comments/Concerns
Hall A	x		Moller / Compton alignment	Next few weeks, as parts are available
12 Gev Arcs	x		Final (2B) alignment in the arcs	EES have to complete hookups
FEL	x		Quad alignment	After mapping

New Work Requests Requiring Schedule Changes:

-

Significant Problems Pending (delays, technical issues, resource issues, scheduling):

-

Staffing Outlook:

- OK.

Shutdown Work Summary

Organization: EES/Safety Systems Group

Name: Kelly Mahoney

Date: 14 November, 2012

Last Two Weeks

Work That Went Well:

Checkout and Repair of North Linac ODH alarm system.

Work That Went Slower Than Expected, Delays, and Issues:

- Test Lab PSS Recovery delays. Access to facility and equipment is on an hour-to-hour basis. Had to rework some Hall D ODH Installation.

Upcoming Work (3-6 weeks from now) (green = no concerns; yellow = some concerns; red = serious concerns)

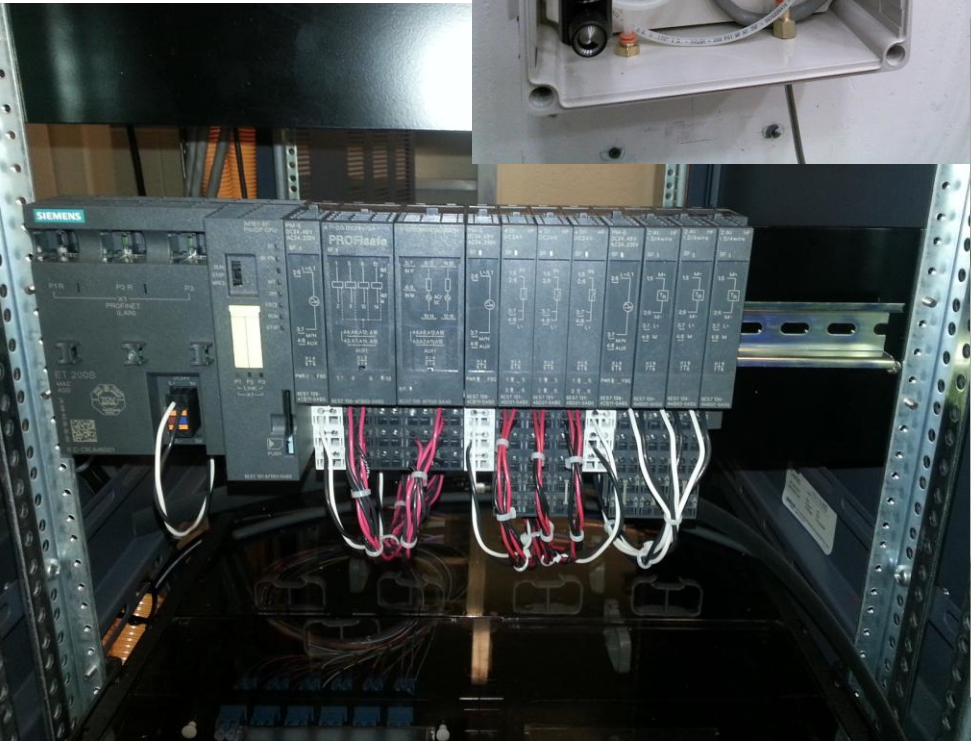
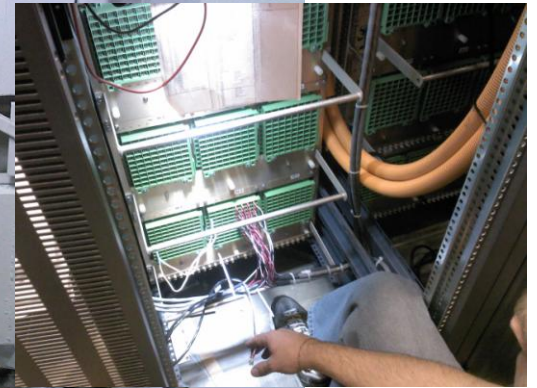
Project	Status	On Schedule?	Tasks	Comments/Concerns
Hall D/Tagger ODH	X	Y	Complete Equipment Installation in Hall D. Complete Equipment Installation in 5C Line (HD Tagger Ramp).	Equipment Installed. Had to rework parts of installation to address QA issues. Infrastructure in place in 5C Ramp.
Test Lab – CMTF	X	N	Recover PSS and ODH Systems. Re-establish AC power. Certify CMTF PSS.	ODH sensors and alarms on-line. AC power requirements identified. Access remains an issue.
Test Lab – VTA	X	N	Recover PSS. Upgrade Interlocks. Certify VTA PSS.	Baseline PSS powered up and OK. Upgrade started. Access remains an issue.
North Linac PSS Upgrade	X	Y	Upgrade PSS; Incorporate Hall D transport line. Install PSS components.	Certification rescheduled for Jan '13. Cabling for tunnel devices in place. Installing PSS devices.

Project	Status	On Schedule?	Tasks	Comments/Concerns
CEBAF Linac PM	X	Y	Audit PSS Systems and start process of recommissioning. "Wake up" PSS.	PM Starting this week.
MPS	X	Y	Order MPS components for FY'14 startup.	BLM HVPS on order. VME Card Build underway. Need to test substitute for 931B PMT.
Flood Recovery	X		Continue assessment. Repair critical infrastructure. Replace electrical outlets. Look at moving equipment > >= 30 in. off of floor.	Cost estimates provided to Facilities and Ops. Walked through with Hall C personnel. New rack space may be available. Some signs of rust in racks. – need to pay attention to grounding/bonding.
FEL Support	X	Y	Support FEL startup and operations.	Administered SSO test to FEL personnel.

New Work Requests Requiring Schedule Changes:

- CEBAF PSS certification moved mid-January '13.
- HDIce facility upgrades will require extension of ODH system.
- FEL Support for new equipment and configurations scheduled for 3rdQ FY13.
- Hall C Flood Recovery FY 13 work - ODH recovery by Feb., 2013. Stabilization of corrosion.





Significant Problems Pending (delays, technical issues, resource issues, scheduling):

- Test Lab Recovery schedule slip continues due to limited access.
- Hall D Tagger Classified as ODH 1. Requires additional ODH monitoring.
- Need to Seal Penetrations in Building E2 or install temporary monitoring.
- Workspace conflicts between Cryo and SSG installation in Hall D.
- Continuing to Postponing Tagger Box Duct installation will soon impact Tagger PSS schedule.

Staffing Outlook:

- Stressed but working. OT is helping to keep milestones.

Shutdown Work Summary

Organization: Hall A

Name: Folts

Date: 11/12/12

Ongoing Shutdown Work

Upcoming Work (3-6 weeks from now) (green = no concerns; yellow = some concerns; red = serious concerns)

Project	Status	On Schedule?	Tasks	Comments/Concerns
Moller Polarimeter quadrupole	X	no	install, align, test	Structural support that was delivered was mismatched by an inch. Had to be disassembled and returned to the machine shop for modification.
Upside down girder	X	no	Ready for magnet connections & alignment	An ATLAS has been submitted for this work and it is being performed on a time available basis.
Compton laser table work	X	yes	Raise laser table for 12Gev beam	Delayed due to laser testing, work proceeded with no expected impact.
Map Compton magnet	X	Unscheduled work (Nanda)	Map #3 Compton dipole	Compton Polarimeter is being reassembled to allow it to be tested and mapped. Need to re assemble magnet guards and reconnect water to magnets then DC power will finish PS checkout

New Work Requests Requiring Schedule Changes:

- none

Significant Problems Pending (delays, technical issues, resource issues, scheduling):

- Moller magnet stand rework

Shutdown Work Summary

Organization: Hall B

Name: Tilles

Date: 11-14-12

Last Two Weeks

Work That Went Better Than Expected:

- Cable Removal
- South Clam removal

Work That Went Slower Than Expected, Delays, and Issues:

- Removal of Panel 2&3 TOF

Ongoing Shutdown Work

Upcoming Work (3-6 weeks from now) (green = no concerns; yellow = some concerns; red = serious concerns)

Project	Status	On Schedule?	Tasks	Comments/Concerns
TOF removal	x	 		Delayed because of lack of tooling. Second half of time of flight is now scheduled to be removed in December.
South-clam removal	x	 		Work was started on 10/30/2012 and is now complete.

Project	Status	On Schedule?	Tasks	Comments/Concerns
Large Angle Calorimeters	x			Both units have been removed and are stored in CMSA with planned disassembly in December 2012.
Torus removal	x			Preparatory work was started on November 17. Torus removal is expected to be completed on January 15, 2013.
HTCC Clean Room		x		The cleanroom installation plan is being developed by Youri in conjunction with Facilities. All signatures have been obtained for proceeding.

New Work Requests Requiring Schedule Changes:

- Fire protection changes due to Rack placement
- Power changes for Cryo system on space frame.

Significant Problems Pending (delays, technical issues, resource issues, scheduling):

- TEDF setup for HTCC cleanroom Behind schedule
- Laser transfer to EEL for 12 GeV Behind schedule

Staffing Outlook:

- 1 person short- making due
- Will be 1 tech short on Dec 31 2012
- Will need 2 tech in March for 3 years for 12 GeV installation above today's manpower

Shutdown Work Summary

Organization: Hall C

Name: Walter Kellner

Date: 11-14-12

Last Two Weeks

Work That Went Better Than Expected:

Work That Went Slower Than Expected, Delays, and Issues:

Ongoing Shutdown Work

Upcoming Work (3-6 weeks from now) (green = no concerns; yellow = some concerns; red = serious concerns)

Project	Status	On Schedule?	Tasks	Comments/Concerns
6Gev	x green yellow red	y	Disassembling and removing the SOS hydraulic cylinders and support frames	SOS removal is now scheduled for completion in February 2013, with SHMS main carriage and shield house installation beginning immediately afterward.
6Gev	x green yellow red	y	Cutting and scrapping the SOS staircase and walkway	
6Gev	x green yellow red	y	Preparation for the SOS shield hut door removal.	

New Work Requests Requiring Schedule Changes:

Significant Problems Pending (delays, technical issues, resource issues, scheduling):

Staffing Outlook:

Shutdown Work Summary

Organization: Hall D

Name: Tom Carstens

Date: November 13, 2012

Ongoing Shutdown Work

Connect Distribution Can to Solenoid Magnet (expected to take 2 more weeks).

1. Fab/test/install internal LHe/LN2 piping
2. Insulate lines
3. Leak check LHe/LN2 systems
4. Fab/insulate/ install 80K shields
5. Close up vacuum spaces

Upcoming Work (3-6 weeks from now) (green = no concerns; yellow = some concerns; red = serious concerns)

Project	Status	Tasks	Comments/Concerns
Ready Solenoid for Cryogenic operation	X	<ol style="list-style-type: none">1. Install vacuum components2. Install warm return line from Vapor Cooled leads3. Start pump/purge cycles4. Install cable trays5. Install/connect/test sensor wiring from controls rack to Solenoid6. Pump down insulation vacuum	This work is expected to take 4 more weeks, with the Solenoid being ready for cool-down on December 15 th .

Project	Status	Tasks	Comments/Concerns
Hall infrastructure needed for cool down	X	1. Assist Cryo's installation of transfer line. 2. Set up Cool-down and magnet test area in Hall	Item 1 is ongoing
Start of gluing/testing BCAL light guides (3840 total)	X	Scheduled start date 15 Dec	Because of Winter shutdown, work is actually expected to begin in January and will continue until April of 2014.

New Work Requests Requiring Schedule Changes:

- None

Significant Problems Pending (delays, technical issues, resource issues, scheduling):

- Because maximum effort will be to complete the Cryo Distribution Box and transfer line installation by Dec 15th, (two shifts until task is completed and cool down of the Solenoid starts) most of the other work will be delayed until this is complete.

Staffing Outlook:

- Have pulled technicians from the Forward Drift Chamber assembly in attempt to meet short term (Oct 8th - Dec 15th) schedule.